

# >> H1 hard shoulder

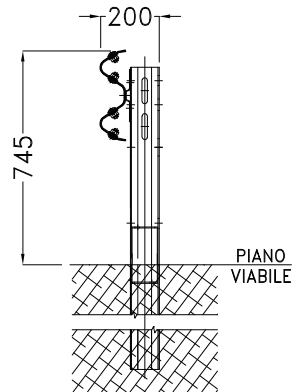
## H1BL600

### components

- W Beam 5333 mm th. 2,5 mm;
- "C" Section Post 25x60x100 mm th. 4,0 mm  
H = 1630 mm c/c 1777,6 mm
- Connection Element (Beam/Post);
- Stiffner for "C" Post;
- Unthreading proof little plate;
- Bolts and Nuts;
- Reflector (n° 1 every 16 m).

This Barrier provides, for each section of barrier, the installation of mitred Approach/Escape modules for a total length of 19,046 m (9,523 for Approach+ 9,523 for Escape)

### section



- **DIS.: H1BL600**  
c/c distance between the posts: **1.777,6 mm**

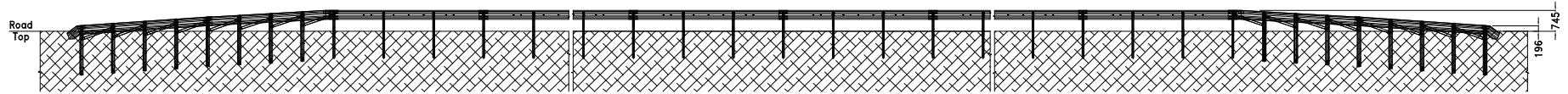
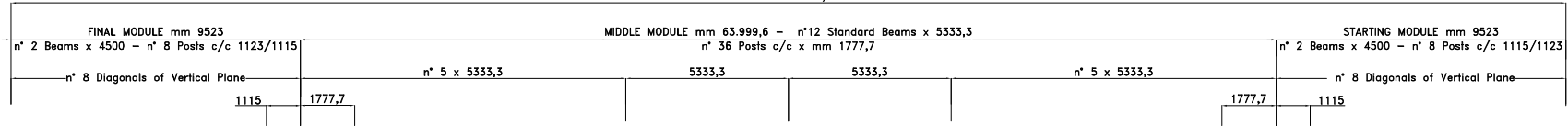
### performance

TB11 - Car 900 kg  
Test: 1276  
ASI: A

TB42 - Truck 10.000 kg  
Test: 1277  
W<sub>N</sub>: m 0,8 (W2)  
D<sub>N</sub>: m 0,7  
V<sub>N</sub>: m 1,2 (V14)

# FRONT VIEW

mm 83045,6



← TRAFFIC DIRECTION (Impact on the Right)

# TOP VIEW

